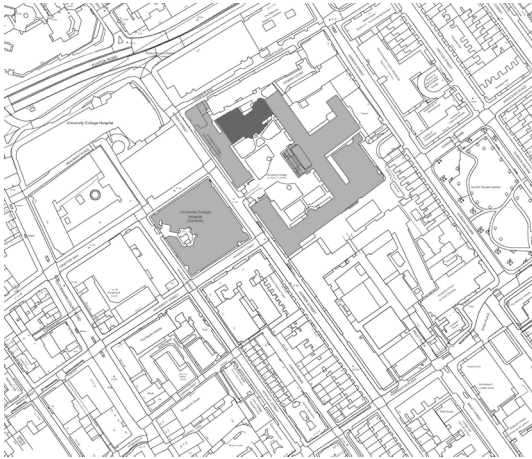
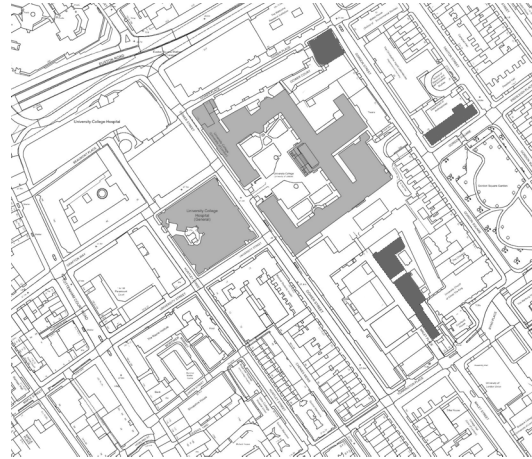


Connections Through Memory_an intervention on campus

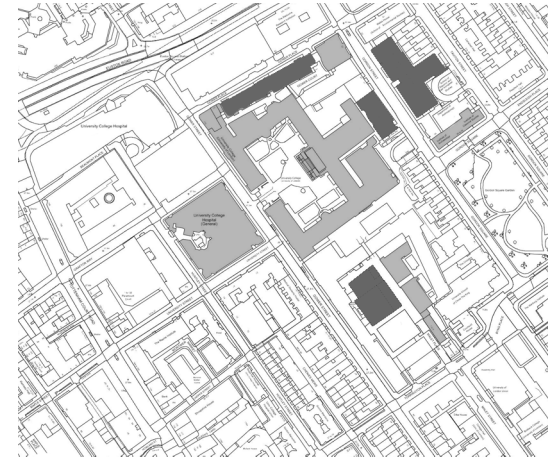
To determine the best way to intervene on the LSBU campus I studied a precedent. University College London is situated in the quiet but well connected area of Bloomsbury.



Late 1800's - 1:2500 Plan



Early 1900's - 1:2500 Plan

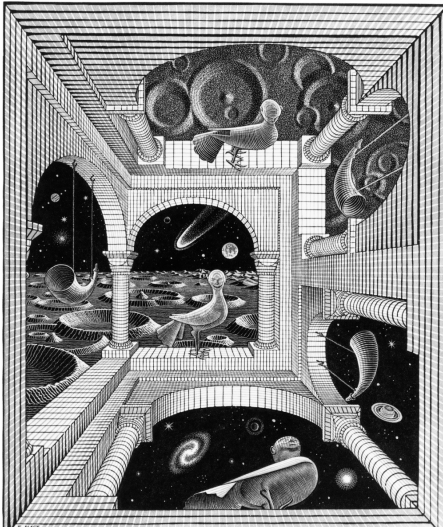


Late 1900's - 1:2500 Plan

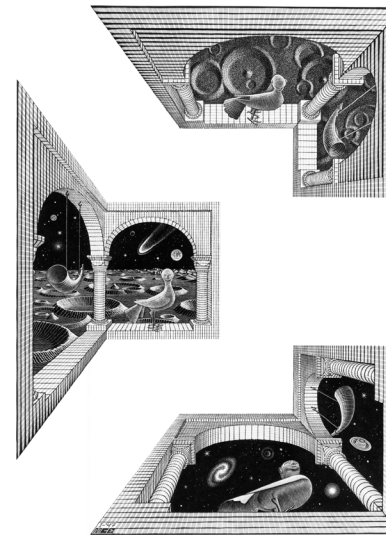
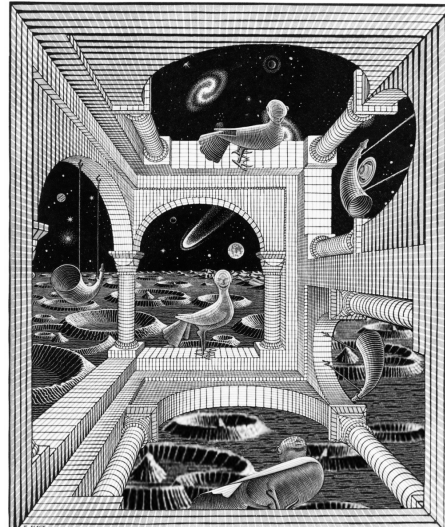
1860 - Slade School of Art founded

1920 - UCL union founded

1967 - Science Library built



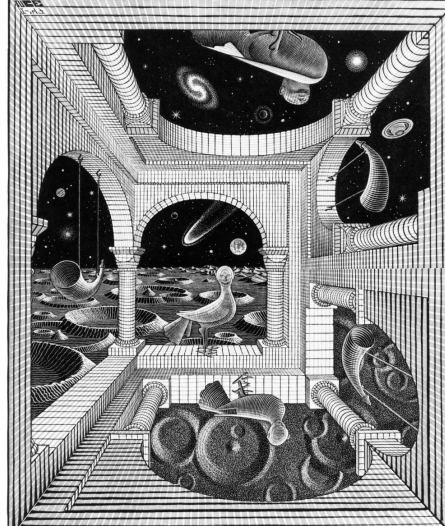
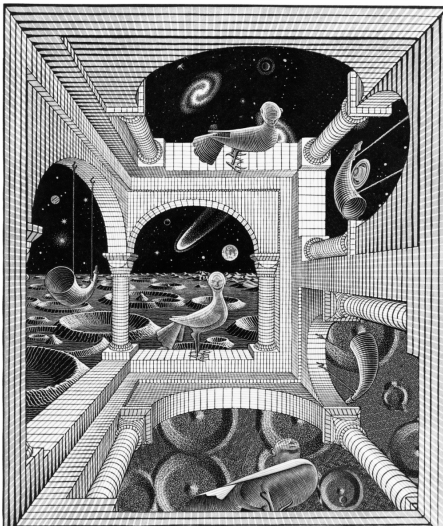
M.C.Escher_Autre Monde



As part of my study into identities and the images that create them I looked at the work of M.C.Escher.

This particular piece called Autre Monde, meaning Another World, plays with the viewers spatial reasoning. Three separate perspectives are displayed through a brick cage which acts as a touchstone to bring the senses back to reality.

I have created several alternate views to understand the limits of spatial perception and exploded the cage to reveal the three perspectives on show

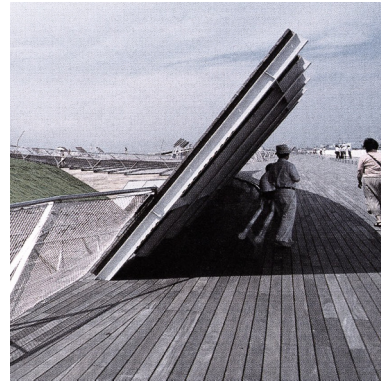




Erhart Jacoby_Single view, three perspectives



Peter Eisenman_Castello Veccio



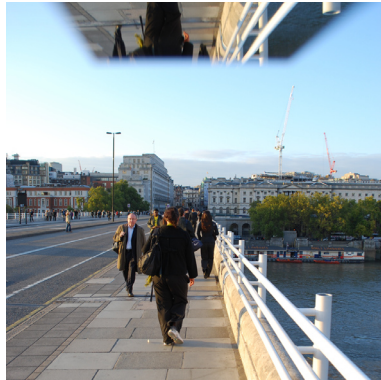
F.O.A_Yokohama Port Terminal



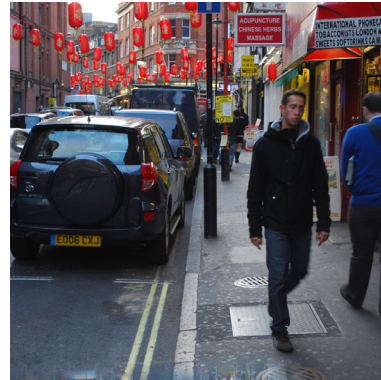
All these precedents deal with the relativity of a plane.



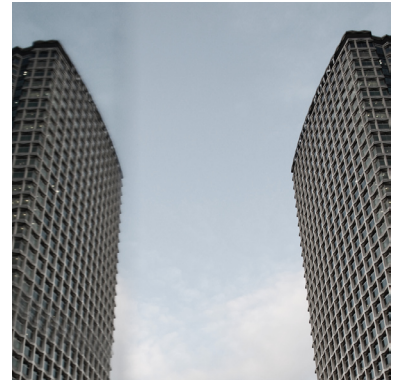
Experiments with mirrors



Taking influence from Autre Monde I started to experiment with perception.



A pocket mirror to present in the same photograph two views of the same space.



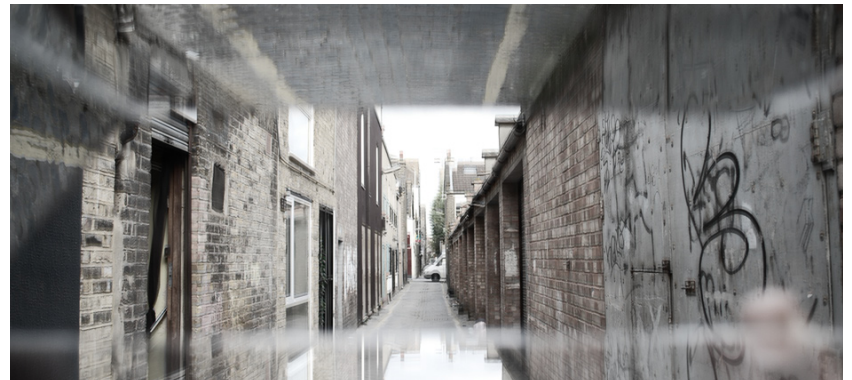
One of reality and one distorted view.

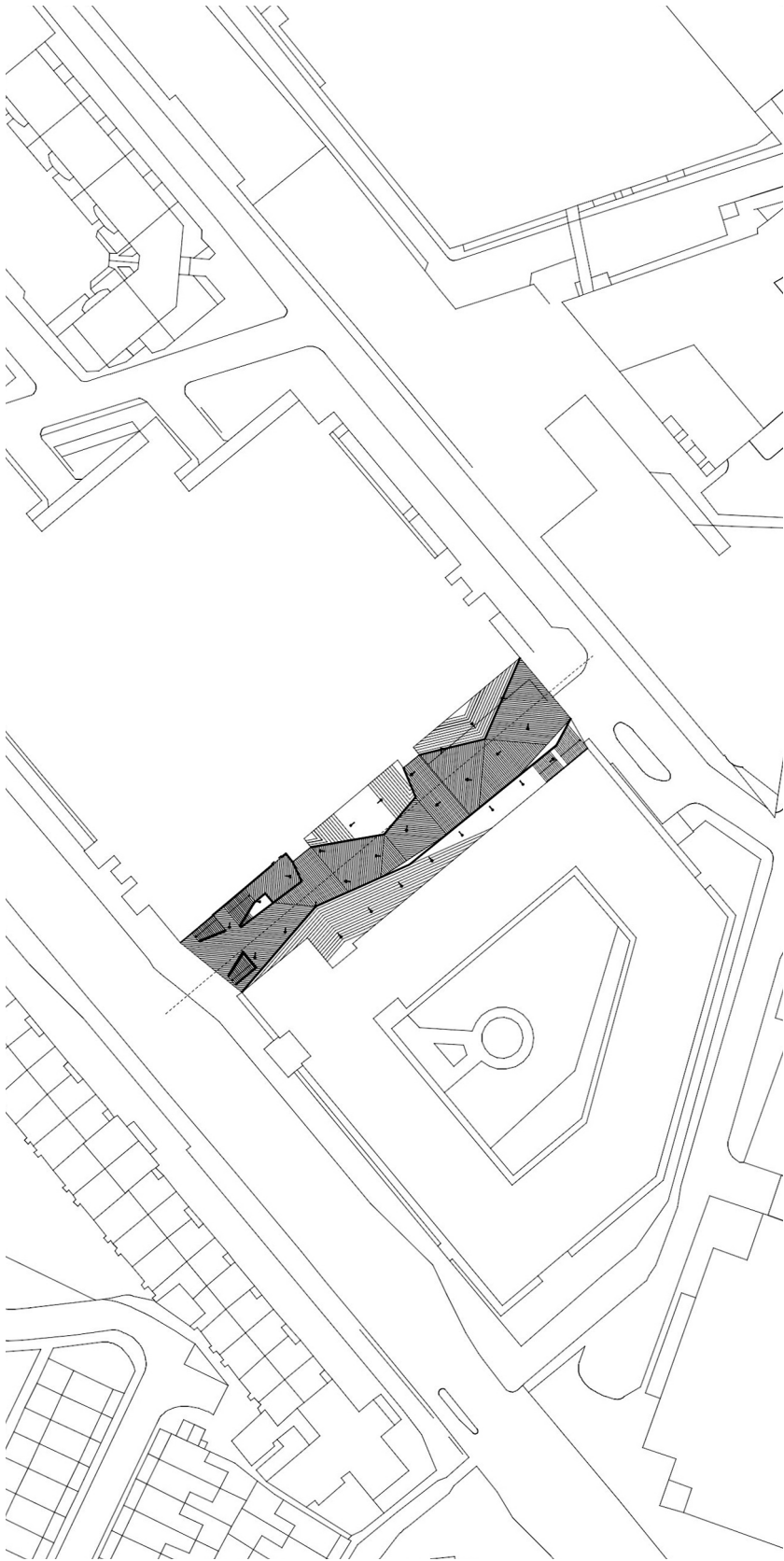


Viewing distortion device

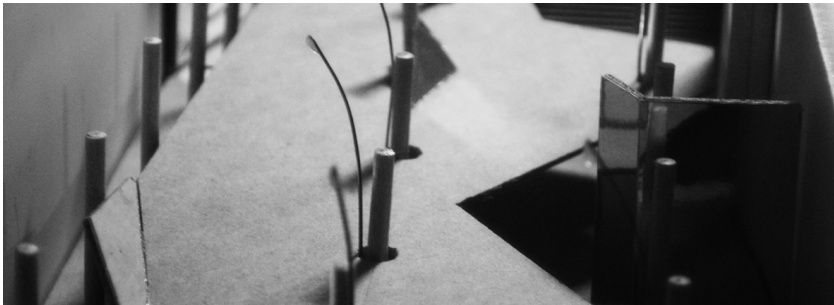


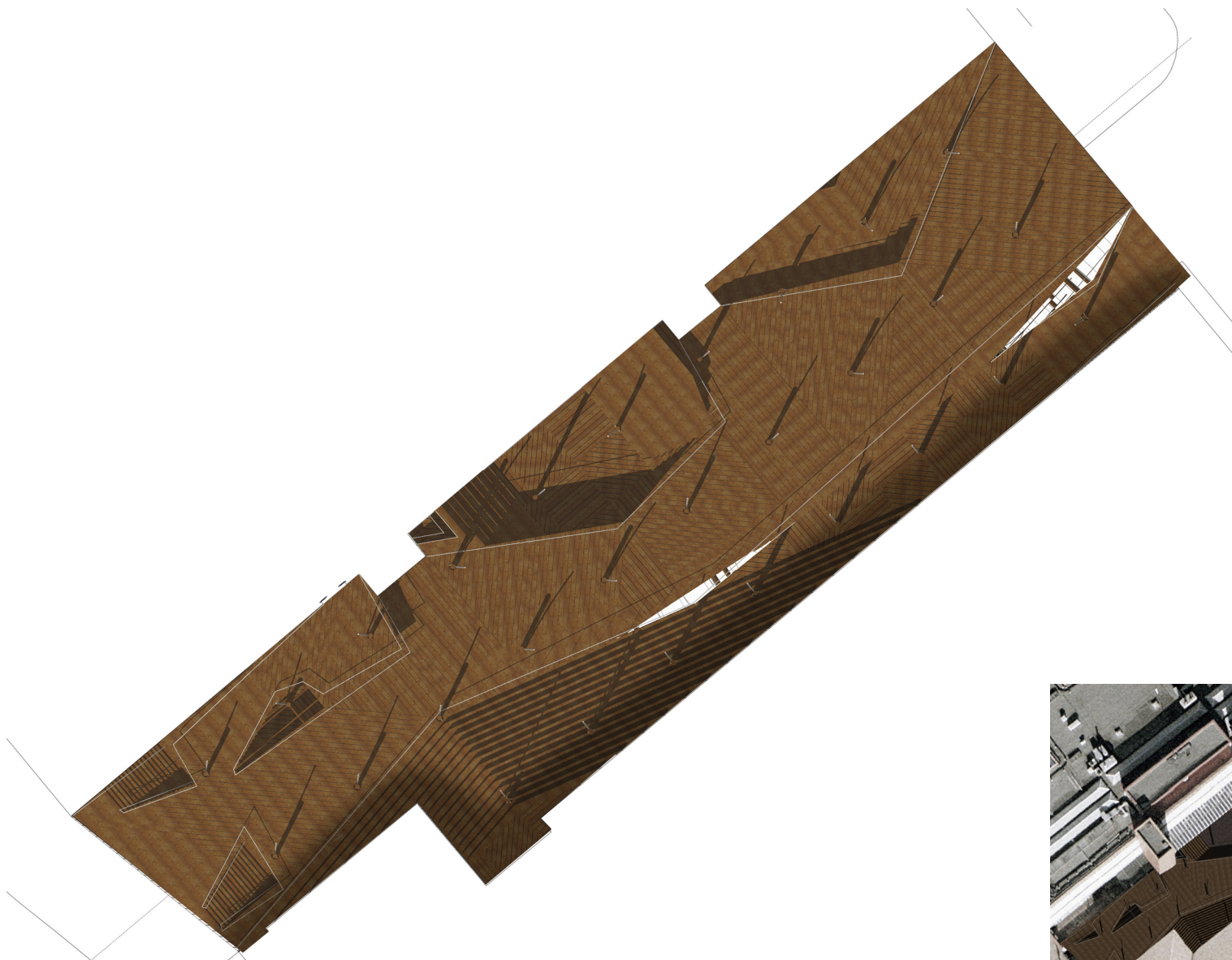
I created a viewing device which consists of two mirrors that work together to give the viewer three different views through the same viewfinder, much like Autre Monde.





Plan 1-500

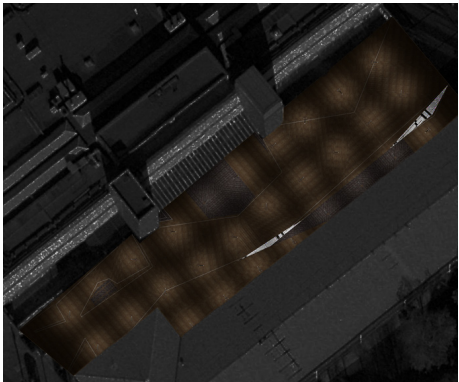




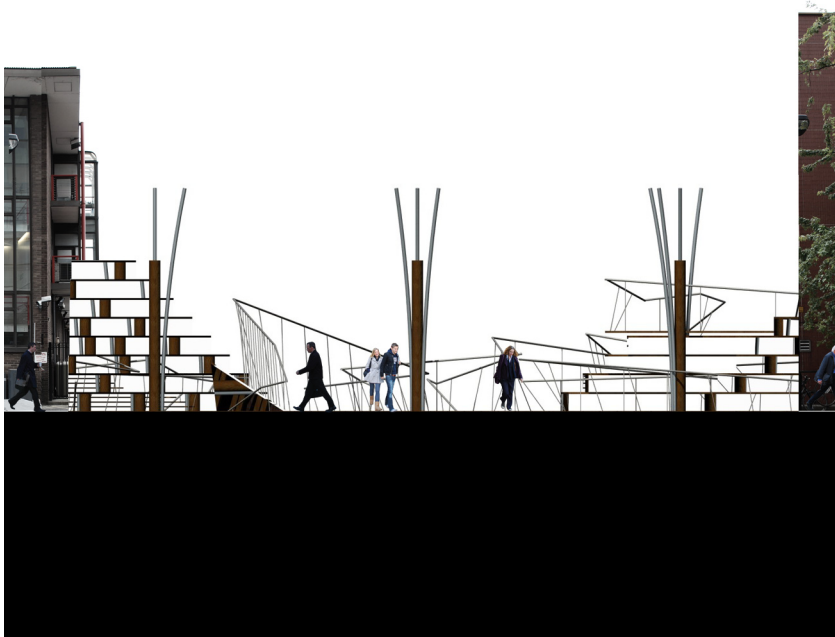
Upper deck plan 1:200



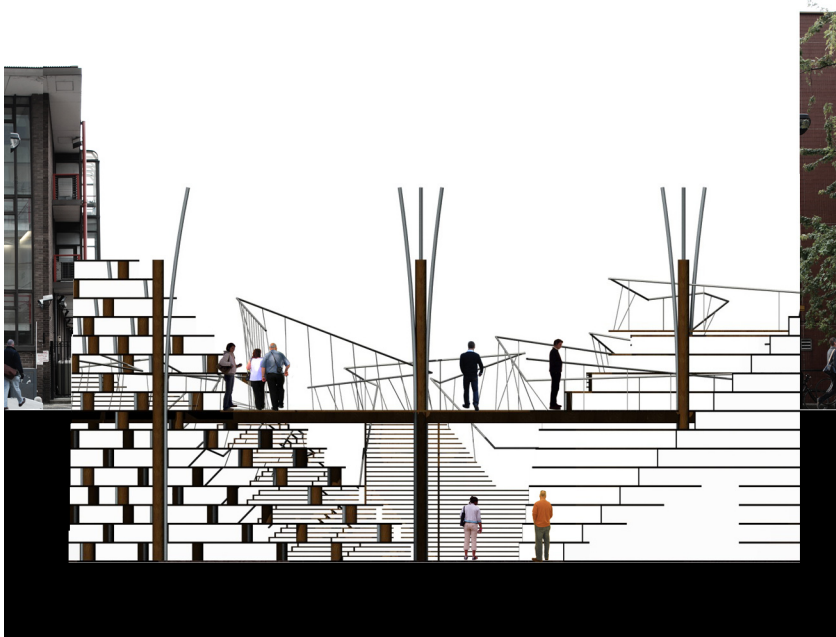
Plan view (day) 1:500



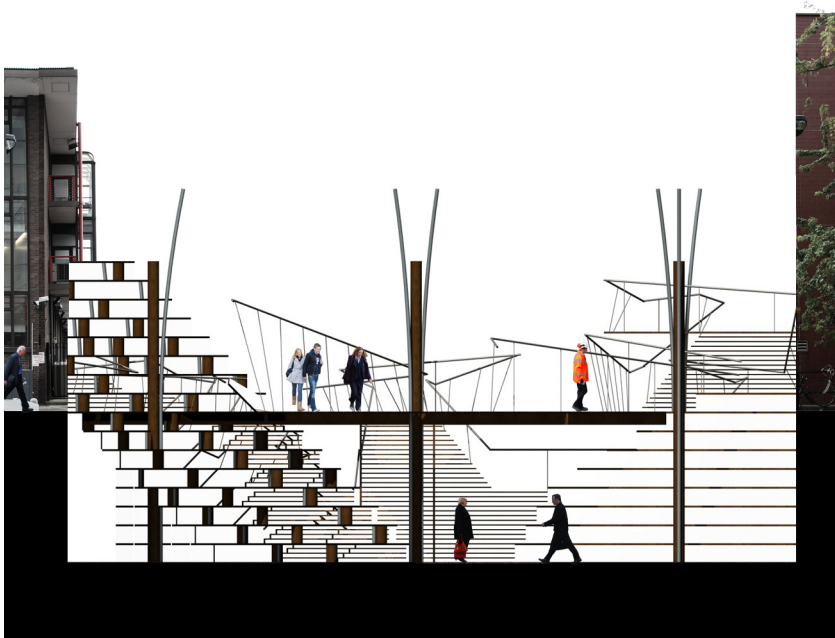
Plan view (night) 1:500



Elevation B 1-200



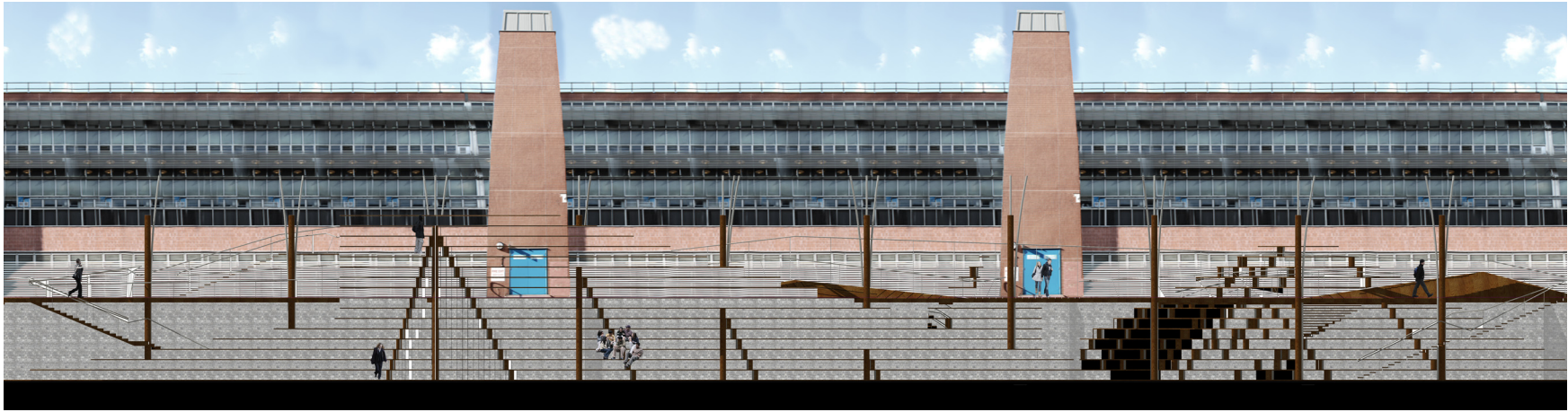
Section B 1-200



Section BB 1-200



Section BBB 1-200



Section A 1-200

